

Breweries of Sheffield

In his 2016 seminal report, beer-writer Pete Brown described Sheffield as 'The World's Best Beer City' and since then things have only improved.

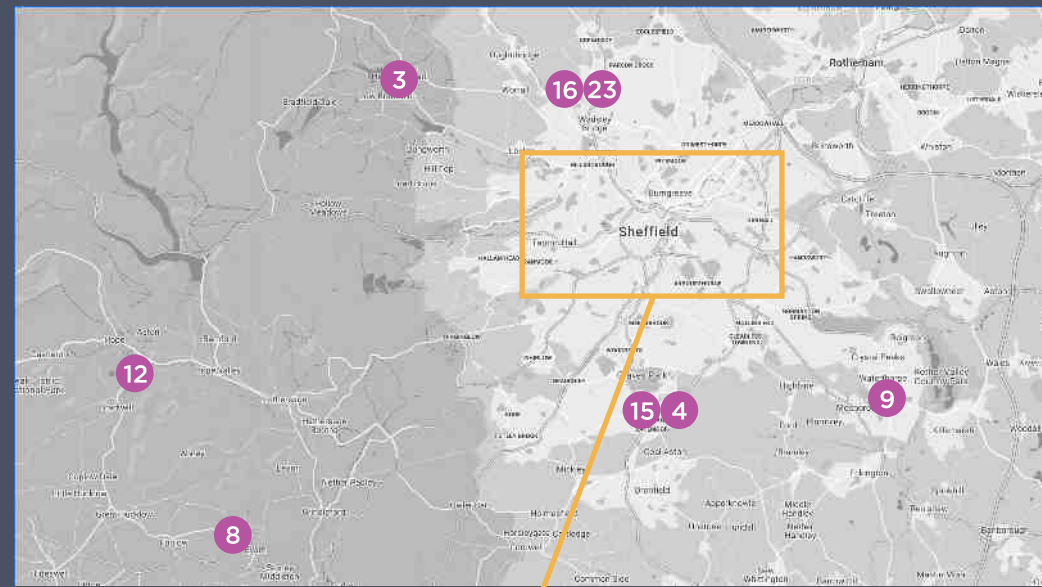
Sheffield has niche pubs and an excellent, diverse beer scene; a mix of traditional heritage assets and modern bars. It has thirty pubs in CAMRA's *Good Beer Guide 2021*, more pubs on the CAMRA heritage lists than any other city in Yorkshire and, outside London, is the only UK city to have its own Real Heritage Pub Guide (free to download from the Sheffield CAMRA website).

It also hosts the only pub to win the CAMRA National Pub of the Year Award in successive years with the Kelham Island Tavern.

Within Sheffield there are 26 functioning brewing companies (and an additional two in the CAMRA branch area), more per head of population than any other UK city. These vary from the long-established Abbeydale, Bradfield, Kelham Island and Sheffield to the newer Heist, Lost Industry and Saint Mars of the Desert (SMOD).

The oldest brewery in the city, Kelham Island, continues to produce a past CAMRA Champion Beer of Britain, *Pale Rider*, while last year SMOD were included in the RateBeer top ten list of 'the world's best new breweries.'

Information correct as of March 2021 and may change due to Covid.



- 1 Abbeydale Brewery
- 2 Blue Bee Brewery
- 3 Bradfield Brewery
- 4 Crosspool Alemakers Society
- 5 Dead Parrot Beer Company
- 6 Emmanuales
- 7 Exit 33 Brewery
- 8 Eyam Brewery
- 9 Fuggly Bunny Brew House
- 10 Grizzly Grains Brewing
- 11 Heist Brew Co.
- 12 Intrepid Brewery
- 13 Kelham Island Brewery
- 14 Little Critters Brewing Ci.
- 15 Little Mesters Brewing
- 16 Lost Industry Brewing
- 17 Loxley Brewery
- 18 Neepsend Brew Co.
- 19 On the Edge Brewery
- 20 Saint Mars of the Desert
- 21 Sheffield Brewery
- 22 Stancil Brewery
- 23 Steel City Brewing
- 24 Tapped Brew Co.
- 25 Toolmakers Brewery
- 26 Triple Point Brewing
- 27 True North Brew Co.
- 28 Ward & Houldsworth

Please check brewery websites for taproom hours, brewery tours etc.



Dead Parrot Beer Company

design by
durb
durb.co.uk



Since the 1990s, Sheffield has seen an explosion in real ale production. This is our guide to the newer and older breweries based in the north, south, east, west and centre of the city and in the wider district.



Abbeydale Brewery

Established in 1996, Abbeydale is the second oldest and one of the largest breweries in Sheffield producing more than 220 barrels a week. Recent investment and expansion enabled substantial growth. In addition to the core range at least one new beer is produced weekly. While many are widely available, some small batch brews are barrel-aged in their Funk Dungeon project.



Blue Bee Brewery

Established in 2010, this independently-owned, 10-barrel brewery supplies throughout Yorkshire and the East Midlands, although it is often seen further afield. Blue Bee produce regular innovative specials and collaborate frequently with other like-minded breweries. Many beers have an emphasis on New World hops and an IPA is always available.



Bradfield Brewery

Established in 2005, this family-run business is based on a working farm in the Peak District using pure Millstone Grit spring water. The nearby Nags Head has been the brewery tap since 2009. In 2018 the brewery obtained the King & Miller, Deepcar, and the nearby Wharnccliffe Arms a year later. Monthly specials are available.



Crosspool Ale Makers Society

Crosspool Ale Makers Society began brewing in 2019, taking over premises from Hopscotch Craft Brewery. The traditional range takes on a local reference theme, with a new retro pop-culture range being introduced this year. The beers are regularly available in an increasing number of Sheffield pubs, and at open brewery events. They are hoping to open their own brewery tap in 2021.



Dead Parrot Beer Company

Dead Parrot's 15-barrel brewery opened in 2018 formed of a collection of equipment from two former brew pubs - the Brewhouse and Frog & Parrot. There is a longer term plan for the complex to include the brewery, taproom and outdoor event space with the taproom granted planning permission in 2020.



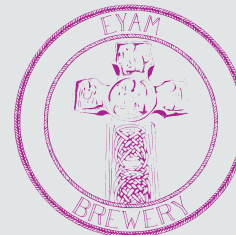
Emmanuales

Emmanuales has been brewing beers of biblical proportions since 2014 AD, spreading the good news one beer at a time. Drawing upon the heritage of the Christian faith, taking inspiration from wherever they can find it within the church, in a tongue in cheek manner, they are not out to force religion down people's throats - just beer!



Exit 33 Brewing

This 8-barrel brewery was founded in Sheffield in 2008 as The Brew Company and rebranded in 2014. 10 regular and several seasonal beers are brewed, as are monthly specials. They brew regular house beers for local pubs, including the ever-popular Harlequin, and also deliver nationally.



Eyam Brewery

One of two Derbyshire breweries in the branch area, Eyam began brewing in 2017 using a 1.5-barrel plant producing keg and bottle-conditioned beers with names reflecting Eyam's history as The Plague Village. In 2019 they expanded to cope with increased demand. Now based in neighbouring Great Hucklow, they supply many local outlets and operate a pop-up shop at the brewery.



Fuggle Bunny Brew House

Established in 2014 and is an independent, family-run brewery. The plant, originally obtained from Flipside Brewery, has since been expanded. The core range is supplemented by occasional seasonal and special brews. Beers are delivered within 40 miles and available nationally through wholesalers. Its first pub opened in Worksop in 2017. Open as a taproom Friday evenings in summer.



Grizzly Grains Brewing

Having purchased the equipment from Crosspool Ale-makers in 2019, Sam Bennett commenced brewing in the Walkley area of Sheffield in 2020. With the Covid pandemic restricting the number of outlets available, the brewery is currently bottling small batches of cask ale, sold mainly via local bottle shops.



Little Mesters Brewing

Little Mesters Brewing are newly established in Sheffield, having taken over the premises and equipment from the former Mitchell's Hop House brewery. Currently have a small core range of three beers, plus various limited edition specials.



Heist Brew Co.

Established by Dan Hunt and Adam France in 2017 as a craft bar and bottle shop, Heist began brewing operations in Clowne, Derbyshire in 2018. Moving to larger premises in Sheffield in 2020 allowed for greater distribution across the United Kingdom and into Europe. Available in keg and can, with limited cask releases.



Lost Industry Brewing

Lost Industry is run by a family of beer enthusiasts which opened in 2015. Brewing a wide range of creative beers, they are becoming well known, in particular, for their sours. There is no core range although favourites may be repeated. Over 100 distinct beers have been brewed in a wide range of styles. They began a barrel ageing programme in 2018.

Intrepid Brewery

Based in the Hope Valley in the Peak District of Derbyshire, Intrepid commenced brewing in the Summer of 2014 on an 8-barrel plant. There are four core beers plus seasonal specials, supplied in cask, keg and bottles. Licensed to retail bottled and mini casks. Brewery tours by arrangement.



Loxley Brewery

Established in 2018, Loxley Brewery uses a 5-barrel plant located in the cellar of the GBG-listed Wisewood Inn. Five regular beers complement occasional specials. Vegan bottle-conditioned beers are bottled on site. Their beers, brewed with water from a natural spring, are becoming increasingly locally available. A second pub, the Raven, is now open in nearby Walkley.

Kelham Island Brewery

Opened in 1990 behind the renowned Fat Cat, the brewery moved to new purpose-built premises in 1999. The old building is used as a visitor centre, and there is a separate brewery shop together with offices and a function room in nearby Prospect House. Monthly specials are brewed and there are some bottle-conditioned beers.

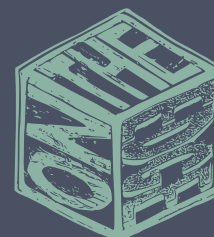


Neepsend Brew Co.

Independent brewery established in June 2015. Moved into new premises on Burton Road in 2020. 10-barrel plant supplying beers throughout the East Midlands - especially the company's own pubs, The Sheaf View, Blake Hotel and Wellington. They produce one core session pale in cask and an ever changing range of other beers in cask, keg and can with an emphasis on hop forward pales.

Little Critters Brewing Co.

A small batch, family-owned microbrewery, opened in 2016 operating on a 10-barrel brewing plant. Pubs are supplied throughout Yorkshire, the East Midlands and nationally. Won Champion Beer of Sheffield at the 2018 Steel City Beer & Cider festival for their *Nutty Ambassador* hazelnut milk stout.



On the Edge Brewery

On The Edge started brewing commercially in 2012 using a 0.5-barrel plant in the brewer's home. Brewing takes place once a week. Three local pubs are supplied as well as beer festivals. There is no regular beer list as new brews are constantly being tried.



Saint Mars of the Desert

With over 20 years of brewing experience, Dann Paquette, and partner Martha Holley, relocated from Boston, Massachusetts to the UK and established the brewery in 2018. The brewery is located in an industrial area of Sheffield and consists of two buildings around a courtyard - one containing the brewery, the other the taproom which opens most Fridays and Saturdays.



Toolmakers Brewery

Toolmakers is a family-run brewery established in 2013 in an old tool-making factory. The regular brews are supplemented by a varying range of different styles and strengths. Beers are brewed on a 5-barrel plant. The function room at the brewery also doubles as the brewery taproom. The brewery also owns the adjoining Forest pub.



Sheffield Brewery

Established in 2006, Sheffield Brewery Company is situated in a former Victorian factory, originally known for making Blanco polish. The 10-barrel plant operates on one of the UK's few traditional gravity-fed tower brewing system. The brewery has its own on-site tap room featuring a bar reclaimed from University of Sheffield Ranmoor Hall of Residence.



Triple Point Brewing

Father and son-operated, modern brewery and bar conversion of what was formerly a carpet showroom. The brewery is clearly visible from the drinking area which operates as the taproom. A wide core range of beers is produced as well as regular specials. *Debut* won Champion Beer of Sheffield at a blind tasting led by Roger Protz at the 2019 Steel City Beer & Cider Festival.



Stancil Brewery

Stancill began brewing in 2014 using equipment from the old Oakwell Brewery famous for its *Barnsley Bitter*. It is one of the many breweries in the Sheffield S3 post code area, and situated on the door step of the late Stones' Cannon Brewery, taking advantage of the soft South Yorkshire water.



True North Brew Co.

True North began brewing in 2012 using spare capacity at Welbeck Abbey Brewery. It opened its own plant on Eldon Street in Sheffield centre in 2016. Mainly supplying 12 pubs owned by the company and some other independent venues. Seasonal beers and kegged varieties are available alongside the core range. In 2020 they began brewing Stone's Bitter in cask to the original recipe.



Steel City Brewing

Steel City was established in 2009 and operates on a cuckoo basis, brewing once or twice a month. Brewing now takes place at Lost Industry Brewing. Much of the Steel City output is collaborations with other like-minded brewers having a little fun producing interesting and experimental beers.



Ward & Houldsworth

Former Kelham Island and Bradfield brewer Paul Ward together with Darren Houldsworth established the company in 2019. Beers are cuckoo brewed locally and sold under the Original Infused brand, reflecting the breweries range of speciality flavoured beers.



Tapped Brew Co.

Following the successful conversion of the old Edwardian dining rooms at Sheffield Railway Station into the Sheffield Tap, brewing began in 2013 at an onsite brewery with viewing gallery.. A wide variety of styles are brewed, including British, American and Continental styles. The beer is also supplied to their other outlets in Euston, York, Harrogate and Newcastle.



6-9 October 2021 Kelham Island Museum

Join us at the festival where (subject to Covid) you can enjoy beer from all of these breweries.